

DTC X-Carve Table

Designed by Paul J. Bennett

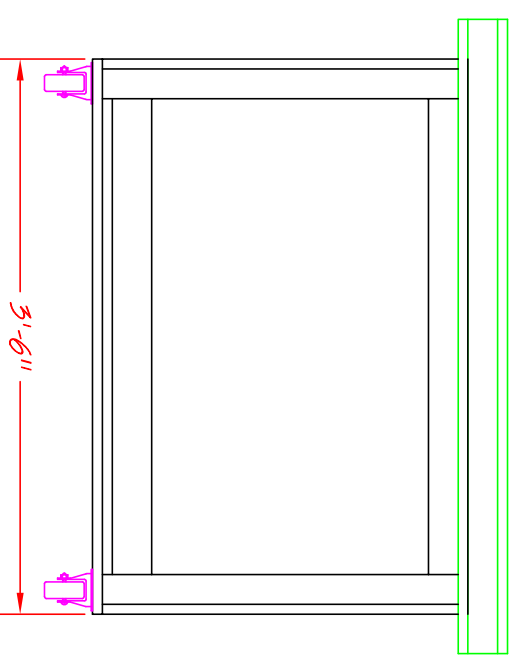
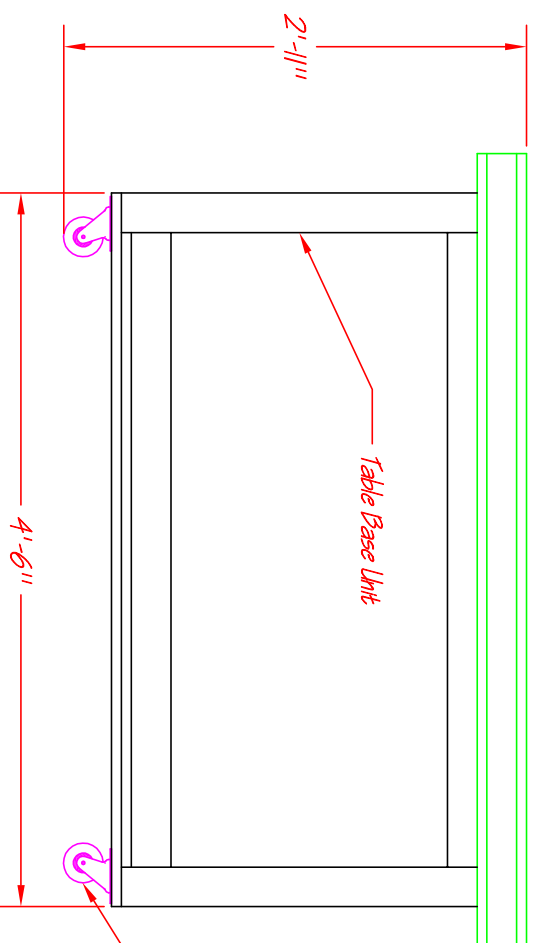
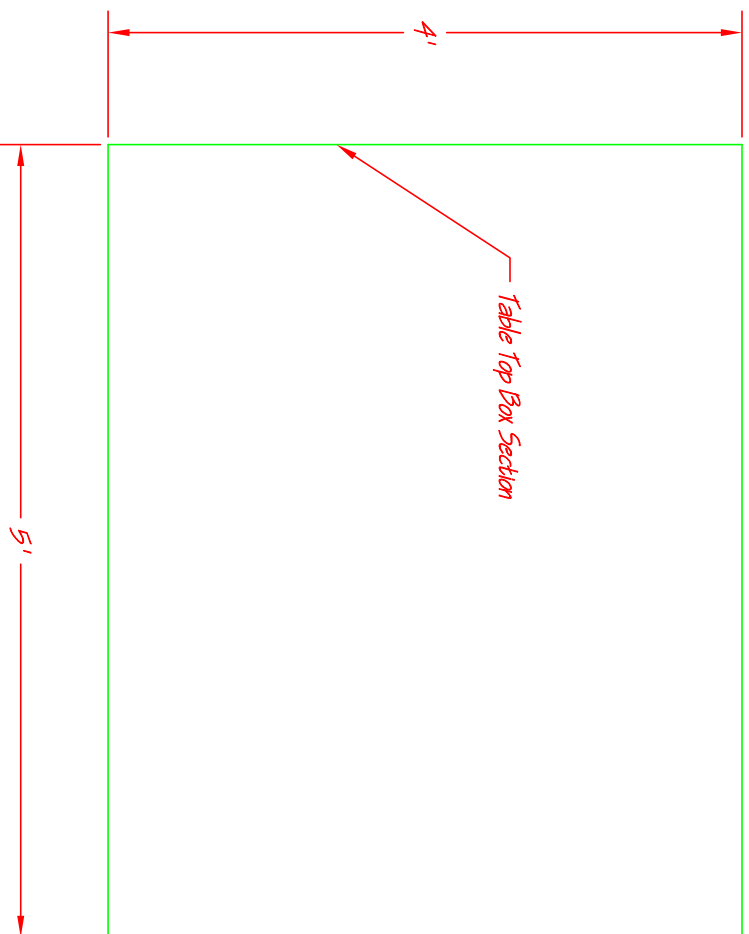
Dawncast Thunder Creations

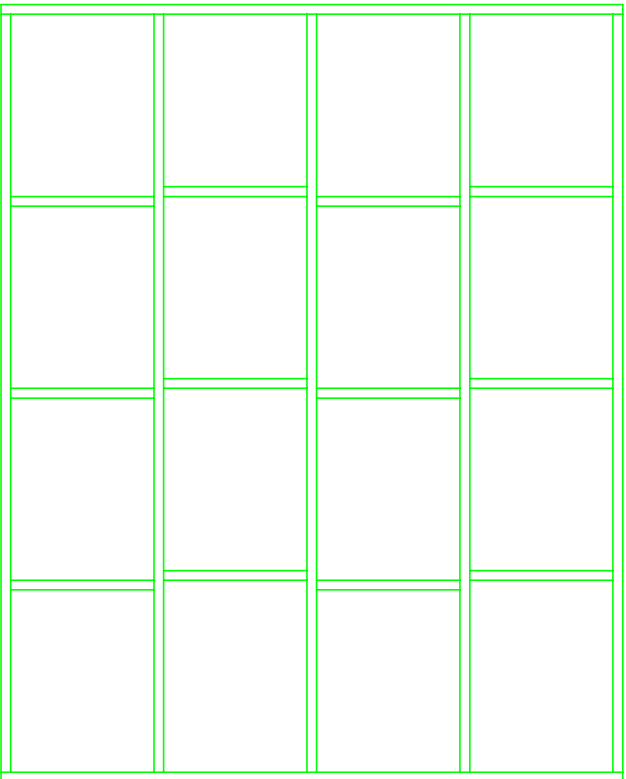
Copyright 2018, all rights reserved

Scale: None

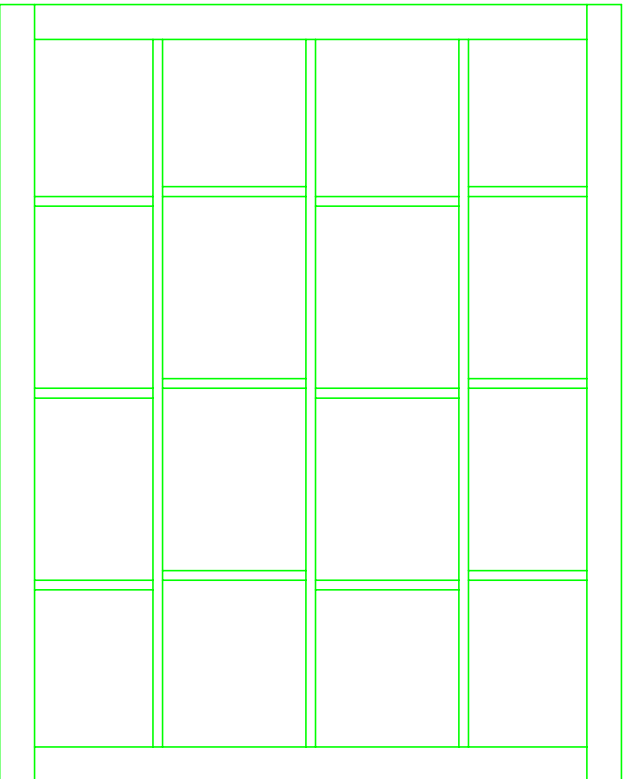
DWG 001

Harbor Freight 3" Diameter, Locking Swivel Casters
Item # 61855





Underside of Table Top (Both Views)



DTC X-Carve Table Top Box Section

Designed by Paul J. Bennett

Downeast Thunder Creations

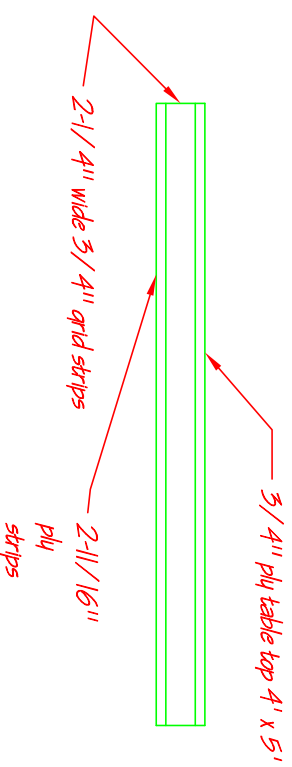
Copyright 2018, all rights reserved

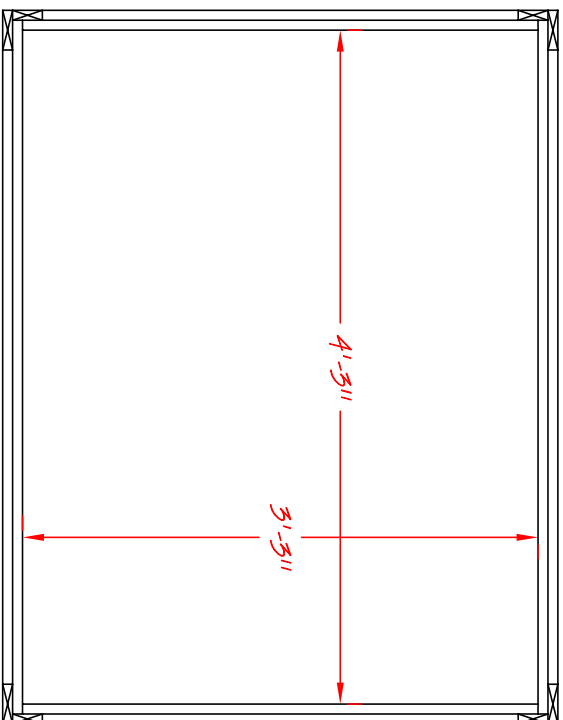
Scale: None

DWG 002

— Add 2-1/4" wide strips of 3/4" plywood
and make similar grid/honeycomb as shown

— Add 2-11/16" strips of 3/4" plywood
around edges of table top over grid as shown





DTC X-Carve Table Base Unit

Designed by Paul J. Bennett

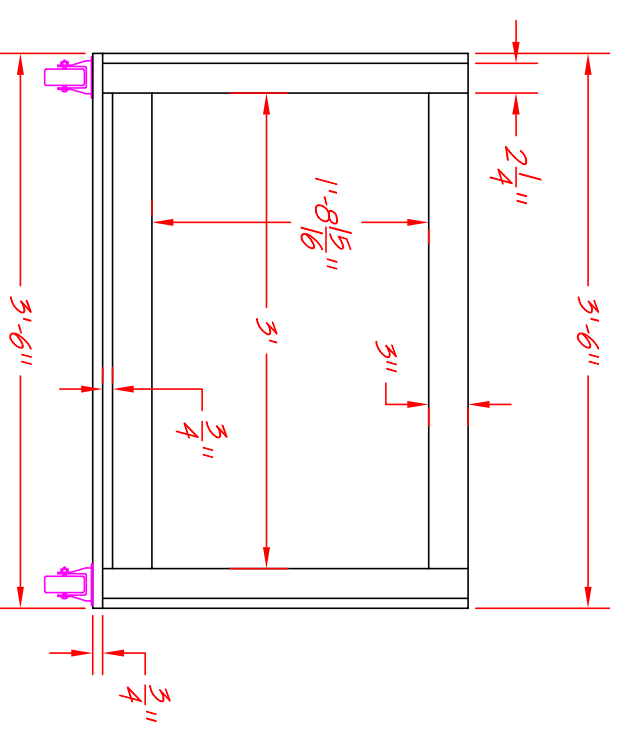
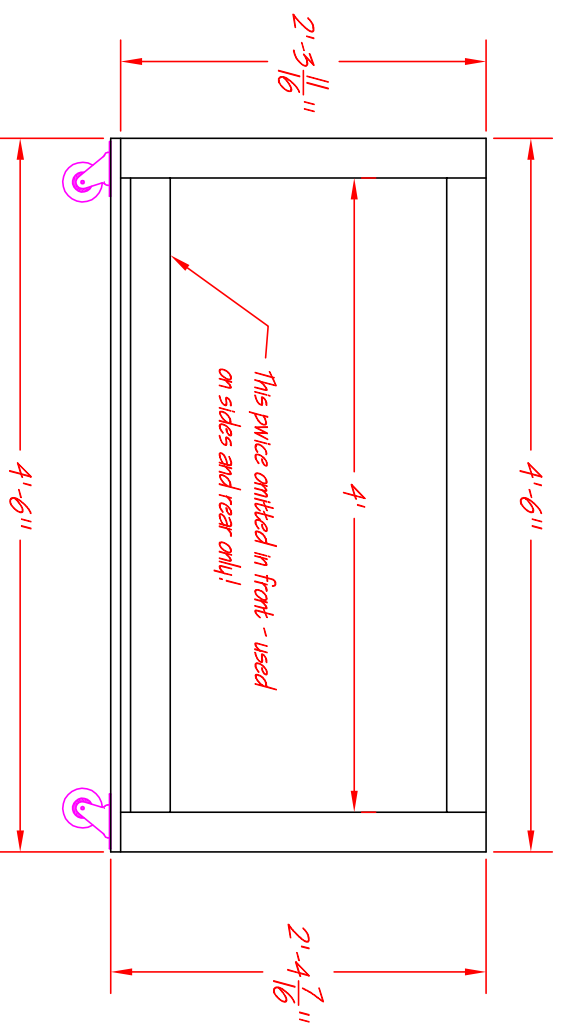
Downeast Thunder Creations

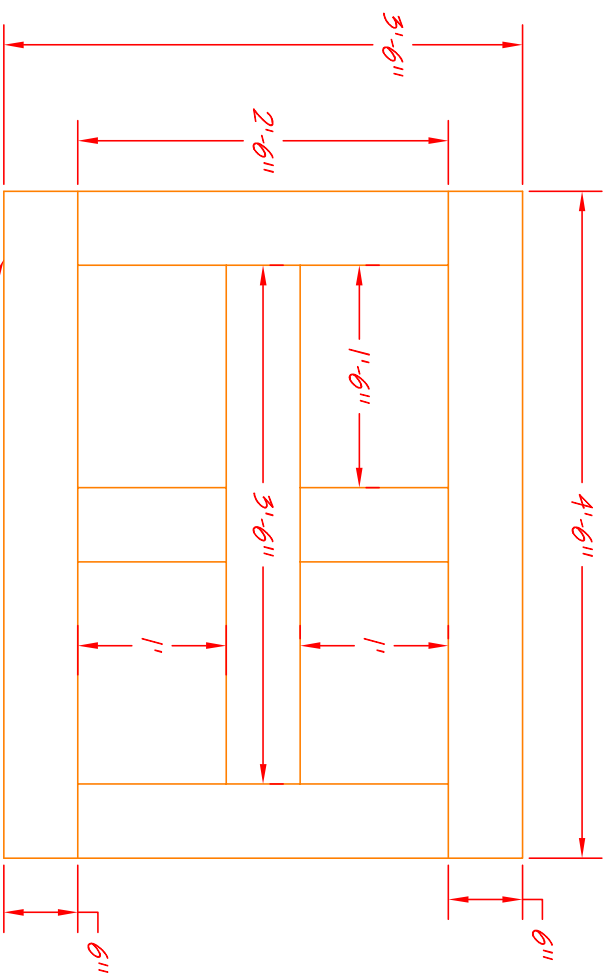
Copyright 2018, all rights reserved

Scale: None

DWG 003

Note: Base Unit constructed entirely w/ 3/ 4" Plywood

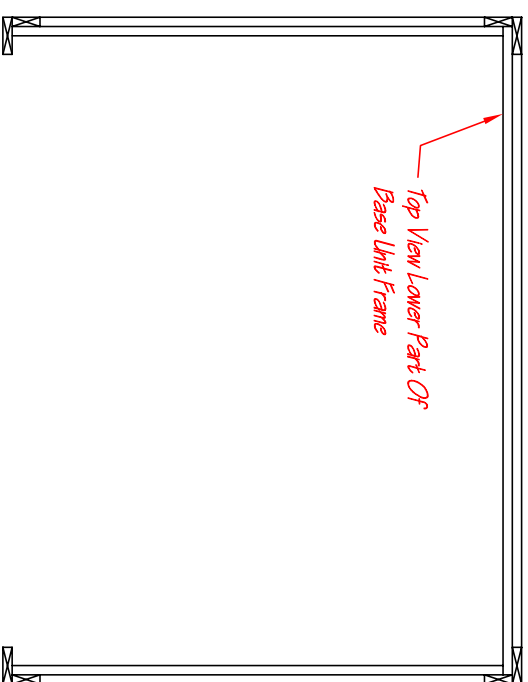
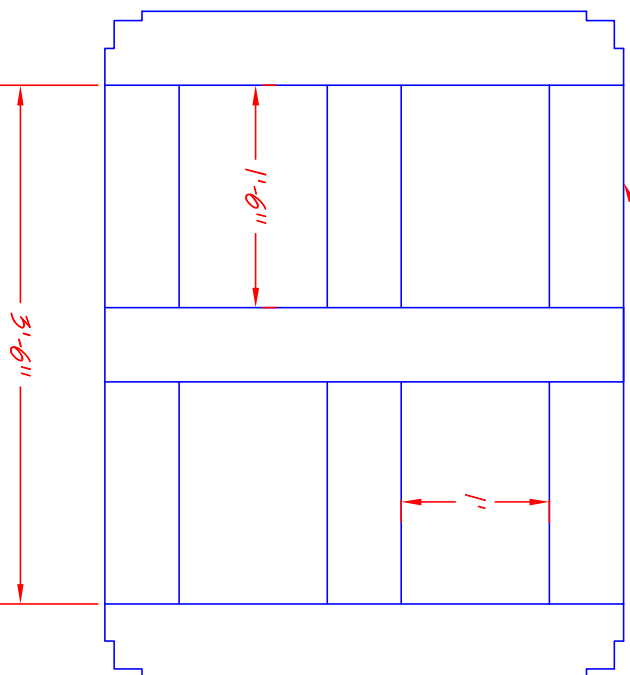




Lower Bottom Section

Upper Bottom Section

Note: Bottom Sections Use Glue & Pocket Hole Joinery
Note: Bottom Section Pieces Are All 6" Wide



Top View Lower Part Of
Base Unit Frame

DTC X-Carve Table Base Unit
Bottom Section Details

Designed by Paul J. Bennett
Downeast Thunder Creations

Copyright 2018, all rights reserved

Scale: None DWG 004