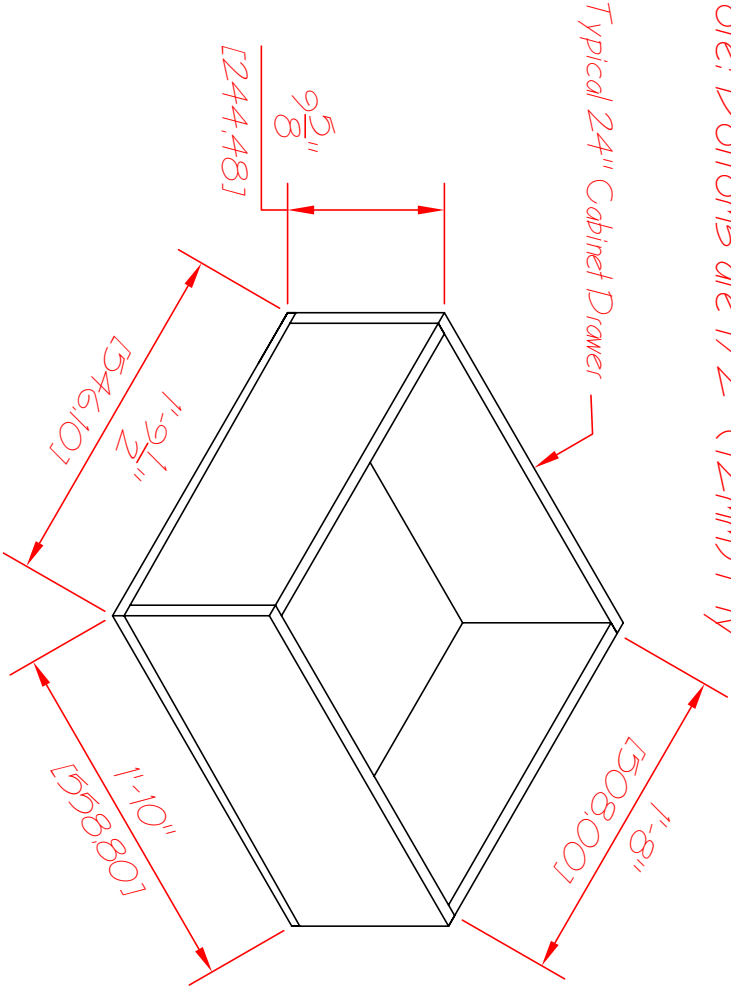


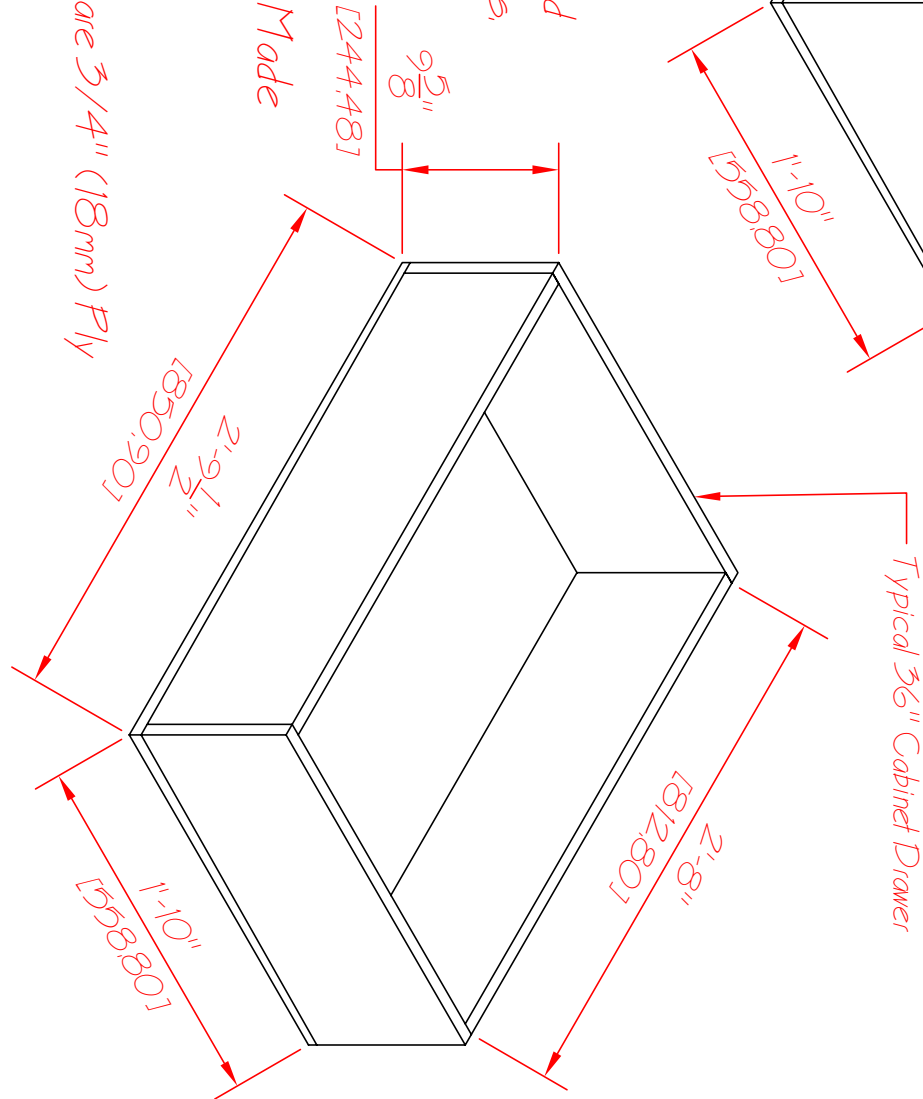
Note: Bottoms are 1/2" (12mm) Ply



Note: Drawer Heights Are As Required for your needs,

Note: 1" (25.4mm) Allowance Was Made For Drawers Slides.

Note: Drawer Front & Side Panels are 3/4" (18mm) Ply



Base Cabinet Drawers

Designed by Paul J. Bennett
Downeast Thunder Creations

Copyright 2018, all rights reserved

Scale: None